

# Workshop

## Student Mobility management: Good Practices

Department of European Educational Programmes

# Aristotle University in numbers

- **Outgoing students – Long term Studies**
  - 1000 applications
  - 600-650 mobilities
- **Outgoing students – Long term Traineeship**
  - 500 applications
  - 400 mobilities



# Aristotle University in numbers

- Incoming students – **Studies**
  - 850 mobilities (per academic year)
- Incoming students – **Traineeship**
  - 80 mobilities (per academic year)



# Outgoing Students Studies - Challenges

- Language knowledge level
- Curriculum (learning agreement, changes)
- Course compatibility & recognition
- Accommodation (no student residences, very expensive rents, victims of scam)
- High cost of living



# Outgoing Students Traineeship - Challenges

- Accommodation (cancellations due to lack of low-cost housing or victims of scam)
- Requirement from Receiving Institutions to sign in Agreements, different from the Erasmus+ Traineeship Agreement (cancellations due to non-signing)
- Organizations that operate as intermediaries, request money from students to find them an internship position. (Cancellations due to no-respect of the terms of the Learning Agreement from the Receiving institution)



# Incoming Students Studies/ Traineeships - Challenges

- Accommodation
- Course offers issues
- Language issues
- Visa issues



# Good Practices - Studies

- Moebius: mobility management web application with the data of our students
- Evaluation of students' applications and digital management of our procedures ( before, during, after the mobility)
- List of former Erasmus students
- Organized appointments
- Cooperation with ESN
- Electronic applications & paperwork processing (OLA, LoA etc)



# Good Practices - Traineeship

- Platform on our website with contact details of selected students to help them find a roommate (search by City)
- List of institutions with available traineeship positions
- Annual calls (2 per year) with specialized documents (Letter of Acceptance) for the facilitation of students and Institutions on the evaluation and accreditation





# Good Practices – Incoming students

## Orientation

2 orientation weeks / year  
Language learning  
Free language courses (on site, online)  
Social & cultural integration  
Close with ESN  
Celebrations/ University Fairs

## Academic assistance

ECTS Coordinators in each School  
English-taught courses or assignments  
Generic courses for all incoming

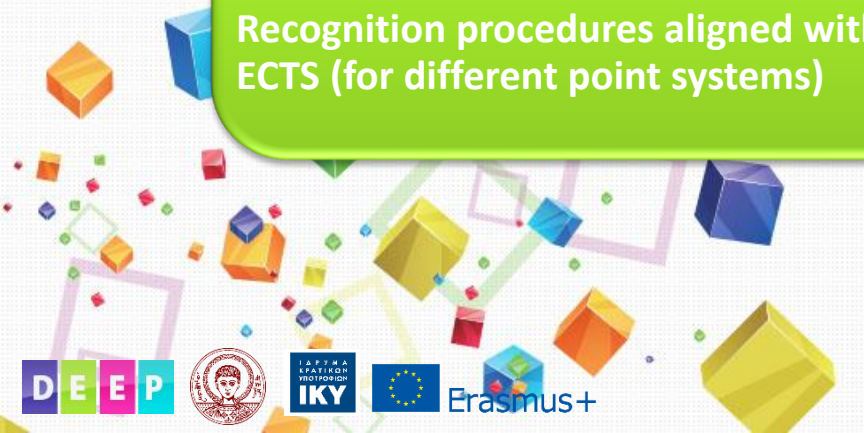
## Academic aspects

## (Erasmus+ International Programme)

Mobility accreditation system for selection of grantees  
Recognition procedures aligned with ECTS (for different point systems)

## 'Post-mobility' assistance

Transcript of records



Erasmus+



# Good Practices – Incoming students

## MOEBIUS

'Home-made' software

Online applications

Bilateral agreements

Direct financial monitoring

Mobility documents

E-nomination and application forms  
for students and staff

Administrative assistance

Erasmus ID Card

Visa

Residence permit

Mobility documents

Accommodation support

Management

Data and info for institutional  
evaluation or control procedures

Statistics

Dissemination

Info – days within & out of AUTH

Thank you for your attention

